



RENAISSANCE  
AT DRY CREEK



# RENAISSANCE AT DRY CREEK

Finally, the home you've been wanting and waiting for. All situated in a prime location just minutes from Interstate 80, the Arden Fair Mall and Downtown Sacramento all of which are areas home to a variety of restaurants, entertainment, and shopping.

Homes at Renaissance at Dry Creek feature modern design and range in size from approximately 1,300 square feet to 2,100 square feet. Maximizing comfort and convenience, each home includes today's most popular amenities. From Energy Star appliances to quaint outdoor living spaces and technology built-in, these homes are smart, beautiful and energy saving.

Discover the exciting benefits of living at Renaissance at Dry Creek.



# EXCEPTIONAL FEATURES

## TECHNOLOGY & ENVIRONMENT PERFORMANCE

- Smart Home/Home Management Center
- Security systems connected through wifi
- Technology pre-wire with Category 5 telephone/data wire at great room, master bedroom, loft and kitchen (per plan)
- Dual-zone heating & air conditioning
- High performance dual-pane low E glass windows with a limited lifetime warranty (per manufacturer)
- Single coat exterior stucco system
- Insulated R-15 / R-19 exterior walls
- R-38 ceiling insulation
- Radiant barrier roof sheathing
- Tankless water heater
- SmartVent
- Water conserving toilets, faucets and shower heads
- Insulated air ducts
- Energy efficient LED lighting
- Energy efficient HVAC unit with 92% AFUE furnace
- Smoke alarms; carbon monoxide detectors; interior fire suppressors (per code)
- 220 volt electric vehicle charging outlet in garage
- Smart vent whole house ventilation

## DISTINCTIVE EXTERIORS

- Technology pre-wire for telephone/data
- Designer coordinated exterior color and roof combinations
- Full front yard landscaping
- 8' 6-panel painted fiberglass entry door
- Sectional roll-up 7' garage door, automatic opener
- High quality 30 year composition roofing
- Exterior light fixtures (per plan)

## EXCEPTIONAL INTERIORS

- Two-panel interior doors
- 9' Ceiling height, first and second stories
- RG-6 coaxial cable in all bedrooms, great room, loft (per plan)
- White decora switches
- Ceiling fan with light kit in great room
- Ceiling fan prewire in secondary bedrooms
- Ceramic tile flooring in entryway, kitchen

and bathrooms

- Satin nickel interior hardware
- Quality carpeting in great room, dining/nook (per plan), bedrooms, loft (per plan) and hallways
- Sheet-rocked and taped garage interior with fluorescent overhead lighting

## DESIGNER KITCHENS

- Granite slab countertops with 6" backsplash
- Double bowl stainless steel undermount sink with disposal
- Chrome pull-out spray faucet
- Stainless steel appliance package including:
  - 30" gas range with micro/hood combo above
  - Built-in dishwasher
- Flat panel cabinetry with concealed hinges

## OWNER'S SUITE

- Flat panel cabinetry with concealed hinges
- 6" x 6" tile vanity top
- Separate shower with clear glass enclosure and tile surround
- Single lever chrome plumbing fixtures with matching bath hardware and vanity sink
- Large walk-in closet (per plan)
- Elegant vanity lighting with chrome finish
- Elongated porcelain toilet
- Ceiling fan with light kit in master bedroom

## SECONDARY BATHROOMS

- Flat panel cabinetry with concealed hinges
- 6" x 6" tile vanity top
- Bathtub shower combination with designer fiberglass shower surround
- Single lever chrome plumbing fixtures with matching bath hardware and vanity sink
- Elongated porcelain toilet
- Elegant vanity lighting with chrome finish

## LAUNDRY ROOMS

- Interior laundry room (per plan) with energy efficient fluorescent lighting
- 220-volt dryer outlet and gas stub
- Convenient wood shelf above washer and dryer (per plan)



PRELIMINARY



RENAISSANCE  
AT DRY CREEK



THE VENICE

1,318 Square Feet

3 Bedroom

2.5 Bathroom

2 Car Tandem Garage



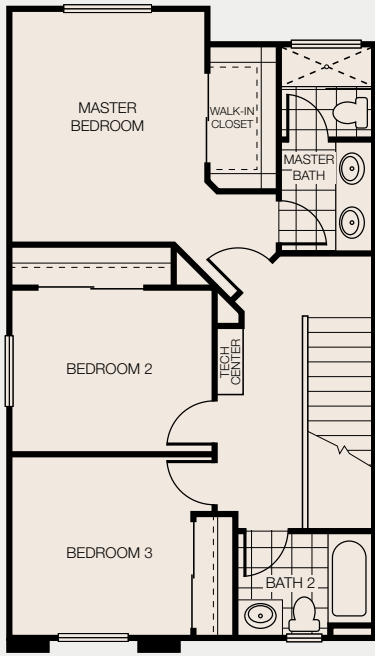
A



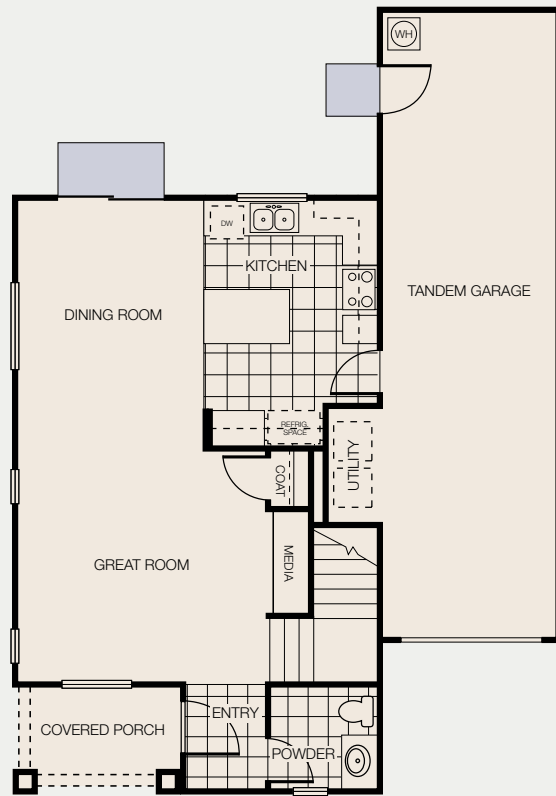
B



C



UPPER LEVEL



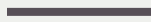
LOWER LEVEL



PRELIMINARY



RENAISSANCE  
AT DRY CREEK



THE FLORENCE

1,408 Square Feet

3 Bedroom

2.5 Bathroom

2 Car Tandem Garage



A

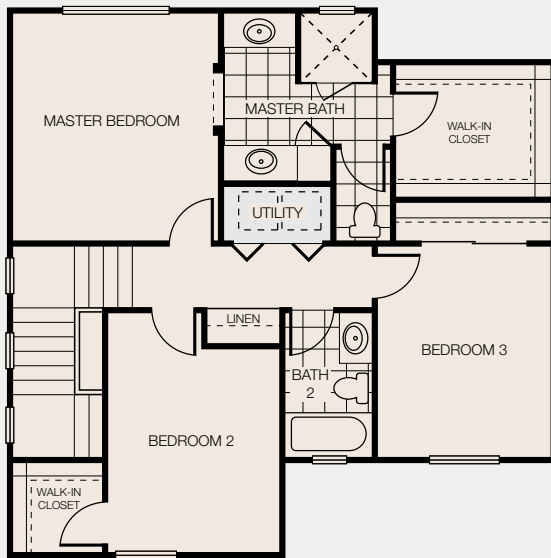


B

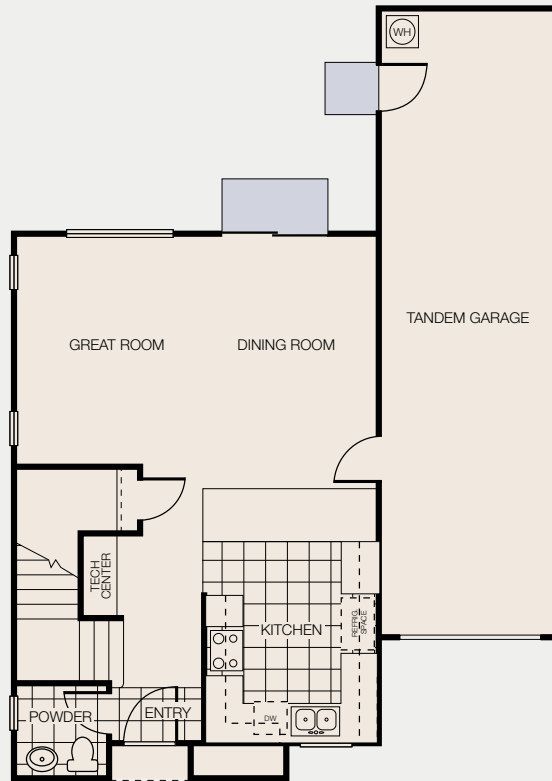


C

PRELIMINARY



UPPER LEVEL



LOWER LEVEL





RENAISSANCE  
AT DRY CREEK



THE PORTOFINO

1,628 Square Feet

4 Bedroom

Optional Loft/Den

2.5 Bathroom

2 Car Tandem Garage



A

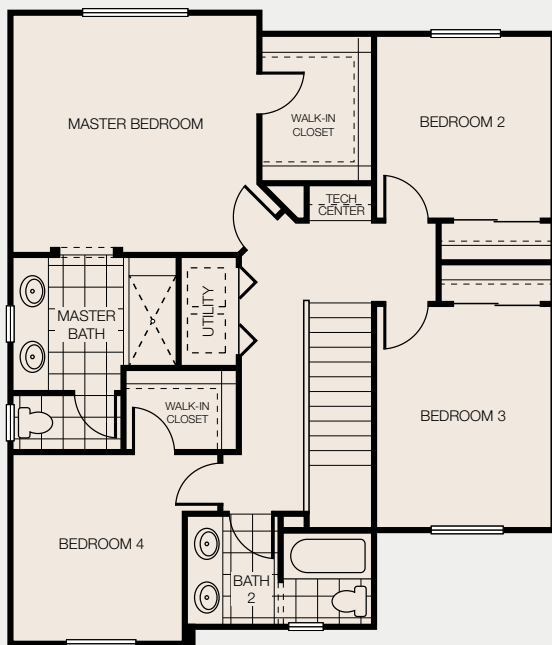


B

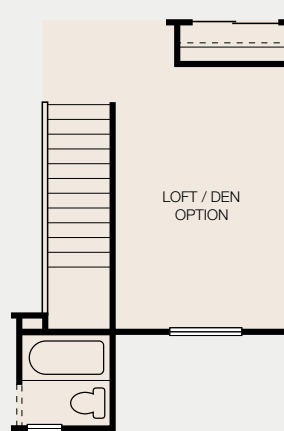


C

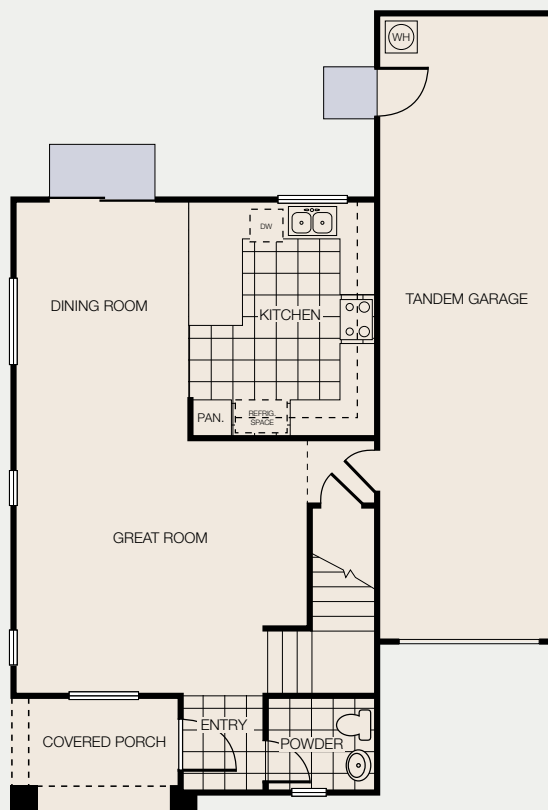




UPPER LEVEL



OPTIONAL LOFT/DEN



LOWER LEVEL



# PRELIMINARY



## RENAISSANCE AT DRY CREEK

---

### THE MILAN

2,109 Square Feet

3 Bedroom / Den / Loft

Optional 4th Bedroom

2.5 Bathroom

2 Car Garage



A

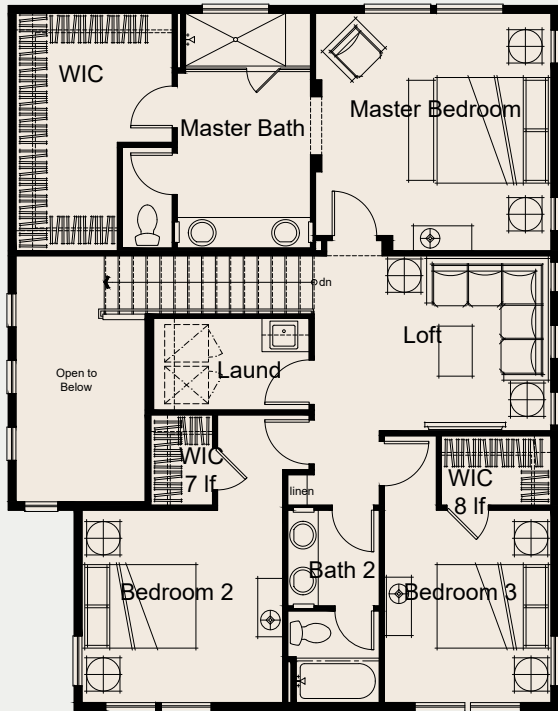


B

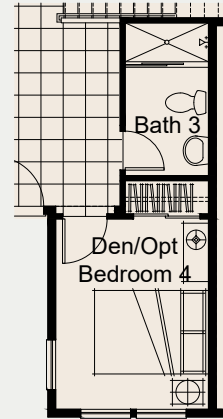


C

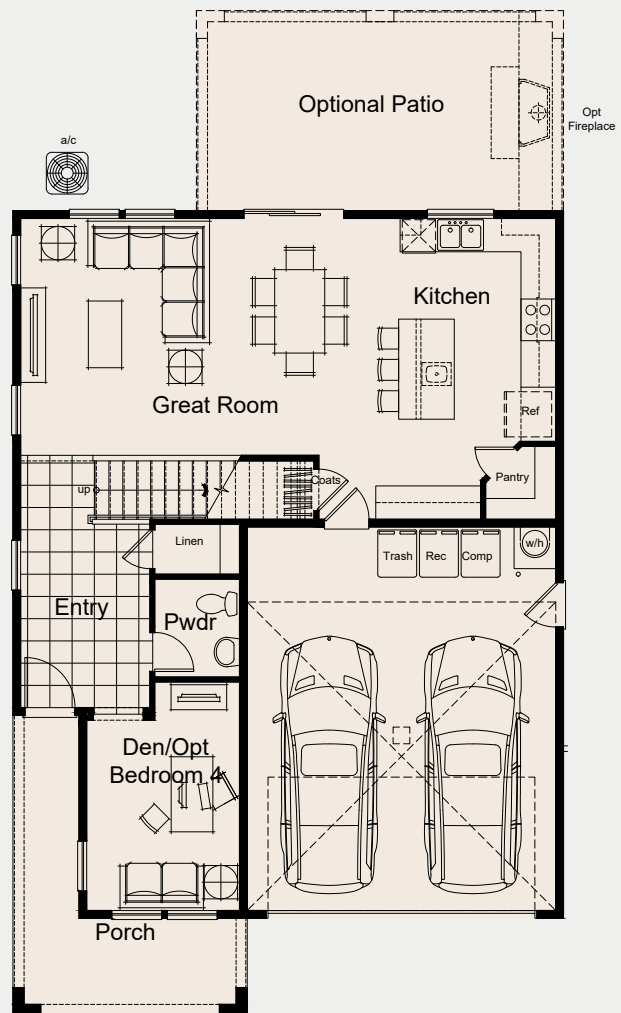
# PRELIMINARY



UPPER LEVEL

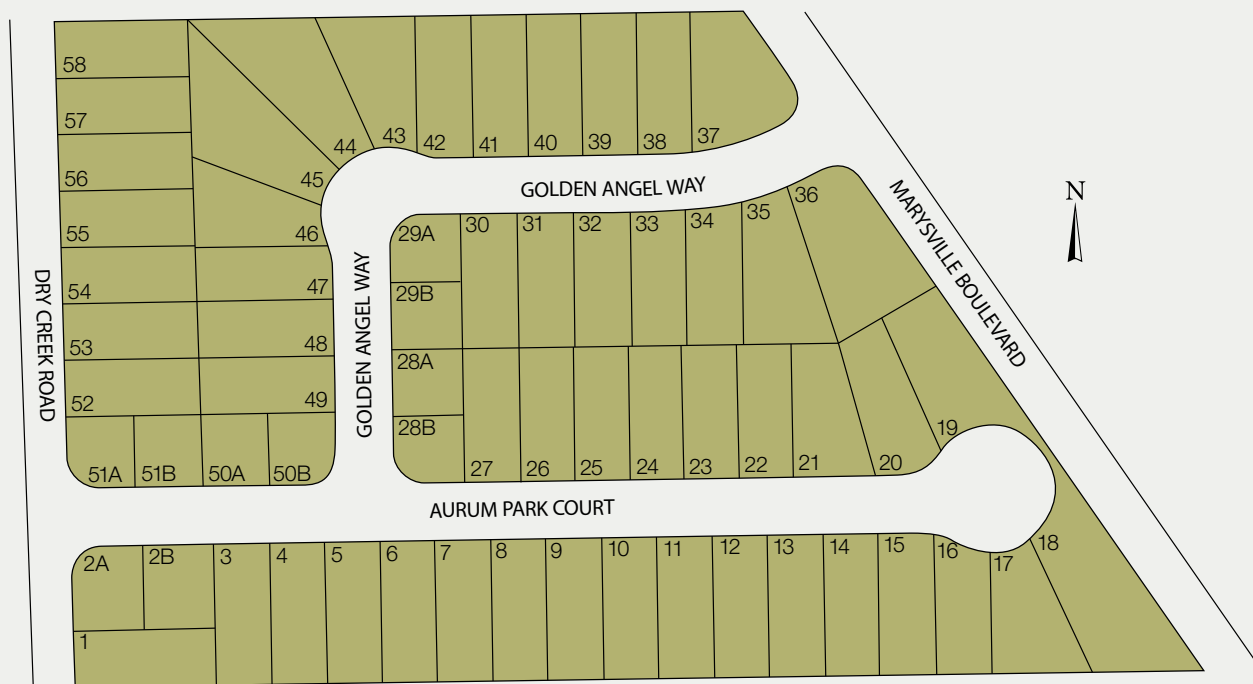


OPTIONAL BEDROOM 4



LOWER LEVEL

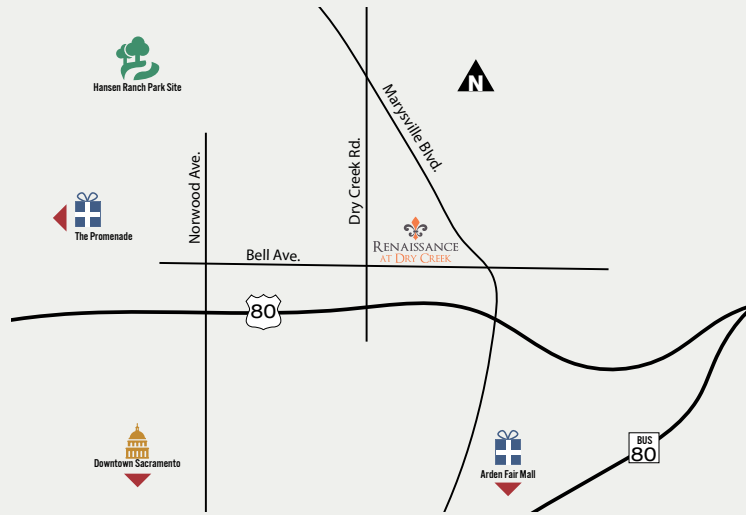
# SITE MAP



PRELIMINARY



## Community Location



[newfaze.com](http://newfaze.com)

Floorplans and renderings are artist's conception and subject to change without notice. New Faze Development, Inc. reserves the right to make changes to these floorplans, specifications, dimensions, and elevations without prior notice. Stated dimensions and square footage are approximate and should not be used as representation of the home's precise or actual size. Map is not to scale. 03.10.17

