



RENAISSANCE
Park





RENAISSANCE
Park

PRELIMINARY

Technology & Environment Performance Home

- Technology pre-wire with Category 5 telephone/data wire at great room, master bedroom, loft and kitchen (per plan)
- Home Management Center
- Essential, expandable security system
- Dual-zone heating & air conditioning
- High performance dual-pane low E glass windows with a limited lifetime warranty (per manufacturer)
- Three coat exterior stucco system
- Insulated R-15 / R-19 exterior walls
- R-38 ceiling insulation
- Radiant barrier roof sheathing
- High efficiency, 50 gallon gas water heater
- Water conserving toilets, faucets and shower heads
- Insulated air ducts
- Energy efficient fluorescent / incandescent lighting
- HVAC: 14 SEER condenser, 93% AFUE furnace
- Smoke alarms; carbon monoxide detectors; interior fire suppressors (per code)

Distinctive Exterior Features

- Designer coordinated exterior color and roof combinations
- Full front yard landscaping
- 8', 6-panel, fiberglass, painted entry door
- Sectional roll-up 7' garage door, automatic opener
- High quality 30 year composition roofing
- Exterior light fixtures (per plan)

Exceptional Interiors

- Two-panel interior doors
- 9' Ceiling height, first and second stories
- RG-6 coaxial cable in all bedrooms, great room, loft (per plan)
- White decora switches
- Ceiling fan with light kit in great room
- Ceramic tile flooring in entryway, kitchen and bathrooms
- Quality carpeting in great room, dining/nook (per plan), bedrooms, loft (per plan) and hallways
- Satin nickel interior hardware
- Sheet rocked and taped garage interior with fluorescent overhead lighting

Designer Kitchen Features

- Granite slab countertops with 6" backsplash
- Double bowl stainless steel undermount sink with disposal
- Chrome pull-out spray faucet
- Stainless steel appliance package including:
 - 30" gas range with micro/hood combo above
 - Built-in dishwasher
- Flat panel cabinetry with concealed hinges

Owner's Suite

- Flat panel cabinetry with concealed hinges
- 6" x 6" tile vanity top
- Separate shower with clear glass enclosure and tile surround
- Single lever chrome plumbing fixtures with matching bath hardware and vanity sink
- Large walk-in closet (per plan)
- Elegant vanity lighting with chrome finish
- Elongated porcelain toilet
- Ceiling fan with light kit in master bedroom

Secondary Bathroom Features

- Flat panel cabinetry with concealed hinges
- 6" x 6" tile vanity top
- Bathtub shower combination with designer fiberglass shower surround
- Single lever chrome plumbing fixtures with matching bath hardware and vanity sink
- Elongated porcelain toilet
- Elegant vanity lighting with chrome finish

Laundry Room

- Interior laundry room (per plan) with energy efficient fluorescent lighting
- 220-volt dryer outlet and gas stub
- Convenient wood shelf above washer and dryer (per plan)

Floorplans and renderings are artist's conception and subject to change without notice. New Faze Development, Inc. reserves the right to make changes to these floorplans, specifications, dimensions, and elevations without prior notice. Stated dimensions and square footage are approximate and should not be used as representation of the home's precise or actual size. 09.19.14



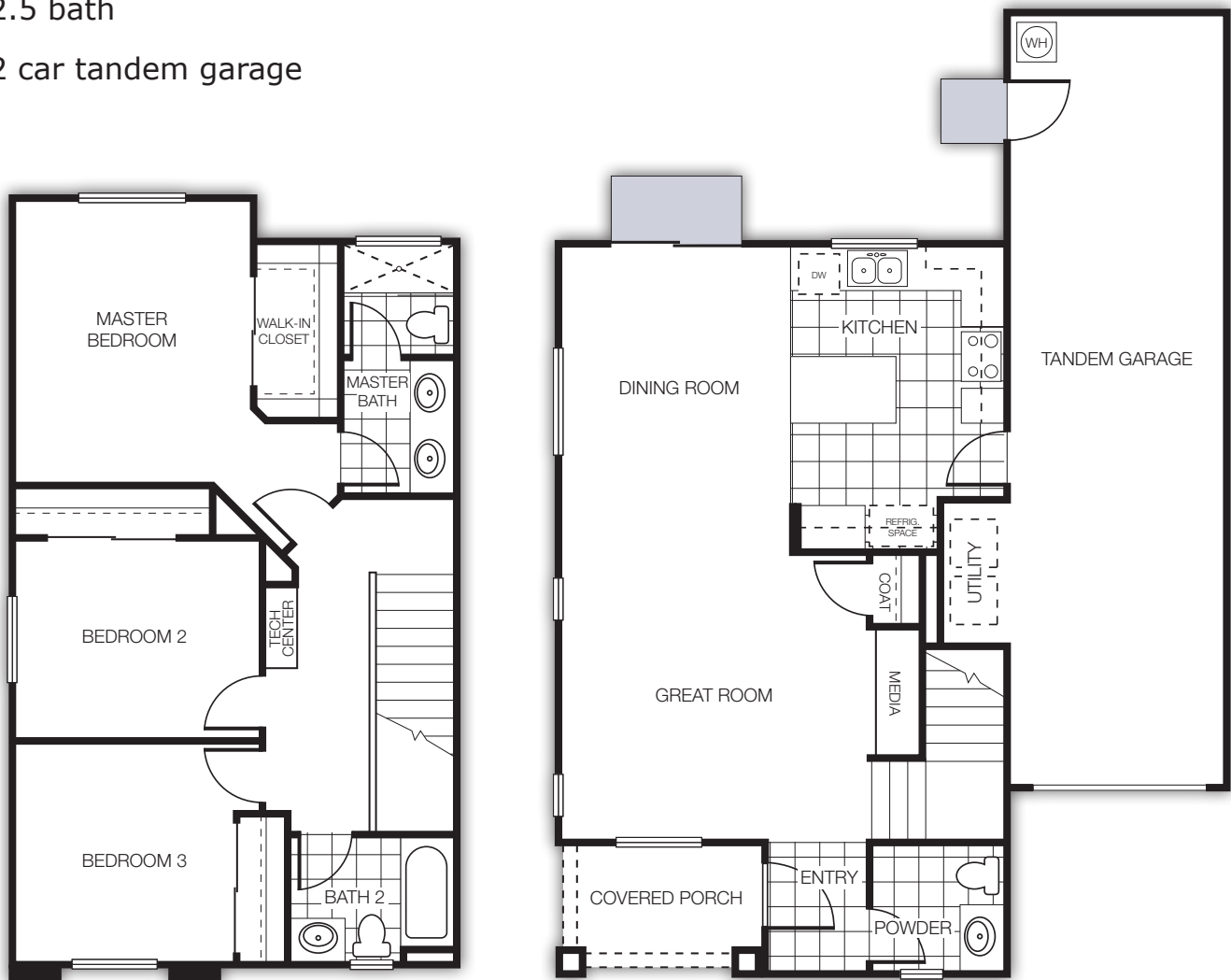


RENAISSANCE

Park

THE VENICE

- 1,318 square feet
- 3 bedroom
- 2.5 bath
- 2 car tandem garage





RENAISSANCE
Park

THE FLORENCE

- 1,408 square feet
- 3 bedroom
- 2.5 bath
- 2 car tandem garage





RENAISSANCE
Park

THE PORTOFINO

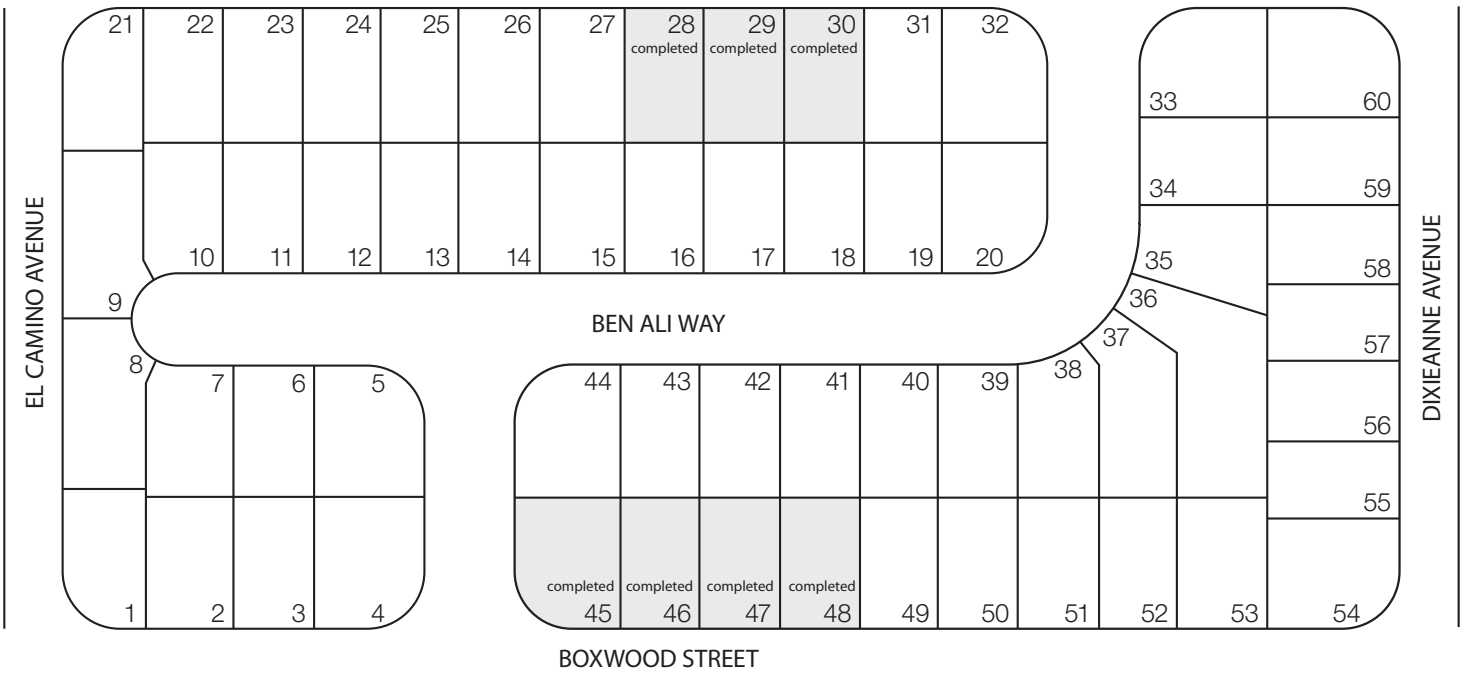
- 1,628 square feet
- 4 bedroom - optional den/loft
- 2.5 bath
- 2 car tandem garage





RENAISSANCE *Park*

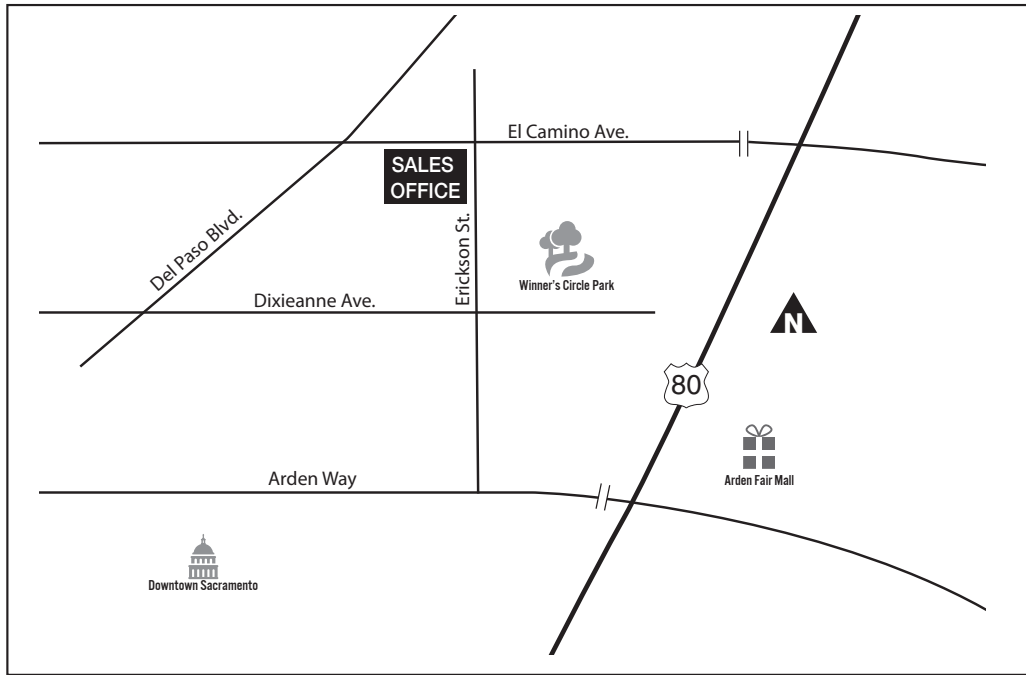
ERICKSON STREET



BOXWOOD STREET



Floorplans and renderings are artist's conception and subject to change without notice. New Faze Development, Inc. reserves the right to make changes to these floorplans, specifications, dimensions, and elevations without prior notice. Stated dimensions and square footage are approximate and should not be used as representation of the home's precise or actual size. Map is not to scale. 08.18.14



RENAISSANCE
Park

Sales Information:

Sandi L. Burden-Bradley
Community Sales Consultant
CABRE# 01004625

(916) 207-6736

Cecil O. Williams I
Community Sales Consultant
CABRE# 01122760

(916) 718-8865

